

LAUNCHING THE APOLLO SMART TERMINAL

Uncover the possibility beyond payment

APOLLO is the first smart terminal by **Spectra Technologies** – an explorer in the payment terminal industry. With the expertise and experience over the last two decades, APOLLO equips with all features for the **next-gen payment solution**.

THE ONE SOLUTION YOU'LL EVER NEED

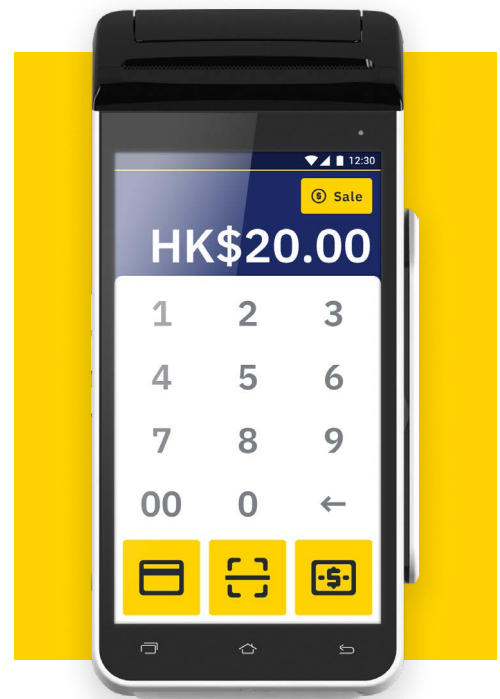
Taking payment faster, easier and safer

Now you can accept every kind of payments with just a single terminal – APOLLO.

Designed with user-centered in mind, APOLLO works perfectly **standalone** or **integrated with your POS system**.

The hardware and software by Spectra compile with the **highest industrial security standards**.

Alongside with APOLLO, the Merchant & Acquirer Revenue System (**MARS**) is a cloud-based management platform to streamline your daily operations and lower operating cost. **MARS** helps you generate more revenue with **APOLLO**.



ACCEPT EVERY KIND OF PAYMENTS

Offer the most advanced payment experience

Whether it's classic payment like **credit cards** or **mobile payment like Apple Pay or Alipay**, you can take any form of payment with APOLLO, and it's future proof.

- *Contactless payment (NFC)*
- *Chip card (EMV)*
- *Magnetic stripe card (MSR)*
- *QR code payment (QR)*



DESIGNED TO FIT UPON EVERY SCENARIO

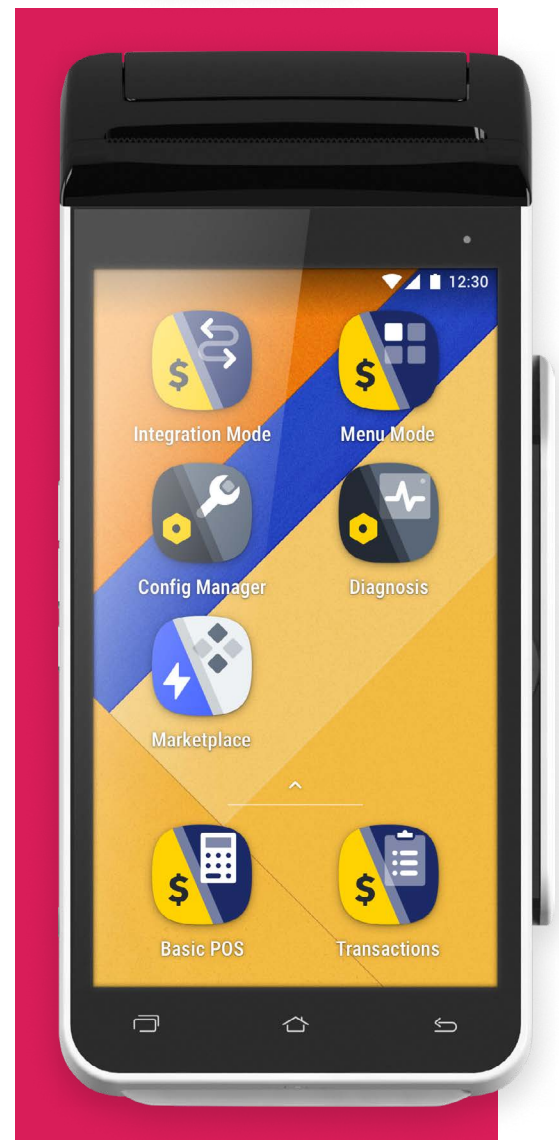
Maximum flexibility for payment and POS needs

Whether **at the counter**, **in the line**, or **at the table**, accepting payments couldn't be easier because the APOLLO comes with **card readers** for chip and contactless cards, **multitouch screen** for e-signature and pin entry, **front and rear camera**, **built-in printer**, and connectivity via the **Wi-Fi or cellular network**.

GET APPS SUITED FOR YOUR BUSINESS

Leverage the power of mobile apps on APOLLO

APOLLO is **Android-based**, and it works seamlessly with many apps that you are already using and love — from **ordering, reporting, bookkeeping, customer relationship management**, and more for your every need.



MERCHANT'S NEW BUSINESS HEADQUARTER

Aggregated and omnichannel dashboard

In MARS, merchants can find all the **aggregated and omnichannel transactional data** on the dashboard — whether it is a credit card or a mobile wallet purchasing. You can see the **sales data**, get **business insights**, and **export report** with just a few clicks — plus many more.

THE WAY APOLLO IS SMART

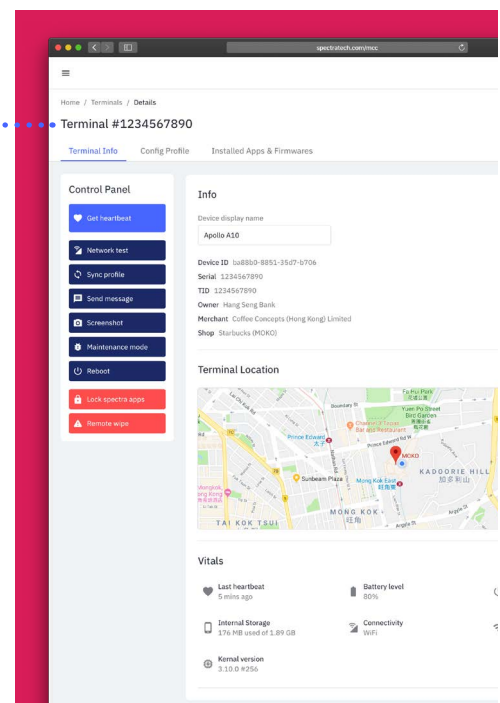
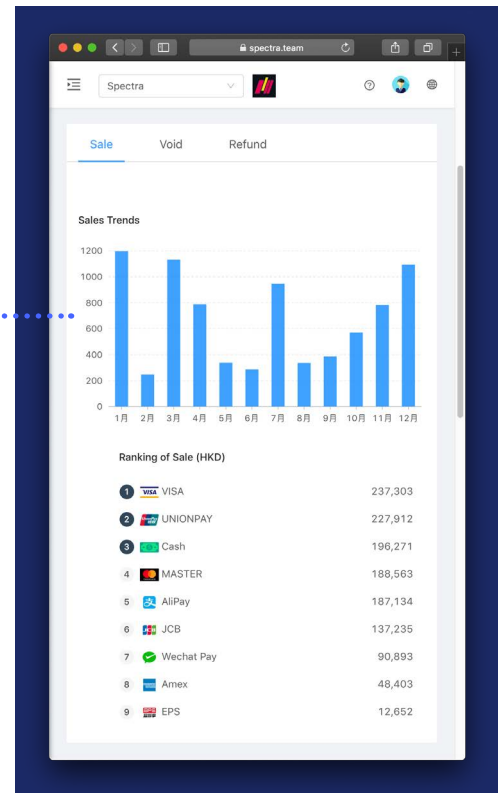
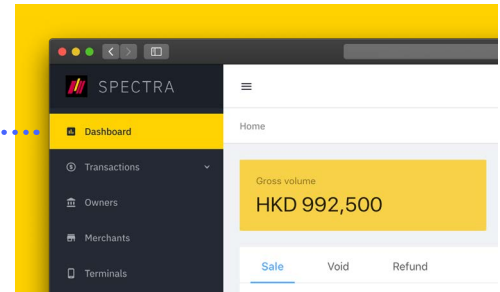
Real-time monitor and control of terminal fleet

In MARS, you can easily **set the terminal parameters**, **perform remote software and firmware update**, **monitor statistical information** about your terminal fleet, and further generate appropriate reports or alerts.

UNCOVER THE INFINITE POSSIBILITIES

Scale rapidly with APOLLO

Our ecosystem is designed to **optimize third-party developer opportunities** — to build apps for **hundreds of thousands of merchants**. We also help you market your apps directly to merchants through our sales and marketing channels. The **APOLLO SDK and APIs are well-documented**. The fundamental building blocks make it easy to integrate with various systems.



Technical Spec

Payment Acceptance Type

Magnetic track 1/2/3
EMV
NFC contactless
QR code

Processor

ARM® Cortex secure processor
Qualcomm Quad-core A7 1.1GHz

Memory

1GB RAM
Optional: 2GB RAM

Storage

8GB Flash
Optional: 16GB Flash

Display

5.5" TFT color display, 720 (w) x 1280 (h) pixels
16.7M Capacitive sensing multitouch screen
Support e-signature and PIN entry

Operating System

Android 7.1 Nougat

Communications

Wi-Fi: 802.11 a/b/g/n
Cellular: 2G / 3G / 4G FDD & TDD
Bluetooth®
Ethernet (requires docking): 10/100 Base-T RJ45 port

Camera

Front and rear camera
Rear camera: 5MP auto zoom camera with flashlight
Front camera: 0.3MP CMOS front camera

Card Readers

Magnetic stripe reader: Triple track, high-coercivity, bi-directional, ISO7811
Chip reader: EMV L1 & L2, ISO 7816
Contactless reader: Support major NFC/contactless scheme, ISO14443 Type A/B MIFARE compatible, ISO18092 FeliCa capable

Printers

Built-in 2.25" thermal printer
Integrated thermal printer with graphics capabilities
≥ 80 mm/s / 18 lines/s
40mm diameter

Audio / Microphone

Built-in speaker and microphone
Support voice recording and playback
3.5mm phone jack

Card Slot

1x SAM slot
2x SIM slots (dual SIM dual standby)
Optional: Micro SD card slot

GPS Tracking

GPS / GLONASS / BEIDOU

Out-of-the-box Applications

Payment Core, Sale, Transactions, Config Manager, Help, Diagnosis, Marketplace, Receipt, and more

Accessories

1x USB OTG (Type C)
Optional: docking unit, fingerprint sensor

Security

PCI PTS, PED and SRED
Support TLS 1.2

Battery

Min. 5200mAh rechargeable battery
Up to 280 hours standby

Power Supply

DC 5V 2A USB charger

Environmental

Operation 0° to 45°C
Storage -20°C to 79°C
85% max. non-condensing

Physical

180 (L) x 84 (W) x 61 (H) mm, 450g

Certification

EMV L1 & L2
PCI PTS v5.1
PayWave, PayPass, Expresspay,
J/Speedy, QPBOC
SRED
TQM
FCC, CE

Card Reader Life

Chip Card: 500,000 reads
MSR: 500,000 swipes